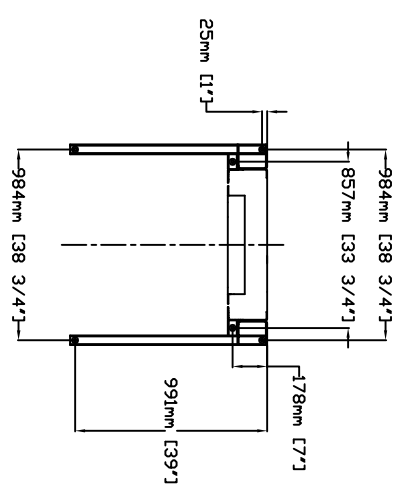


TABLE 1- MAST HEIGHT\*

Max. Travel mm (Inches)	Extension Height mm (Inches)		Mast Height with 4.188" CAP mm Inches	
1219 (48")	1	2388 (94")	1778 (70")	1168 (46")
1524 (60")	1			559 (22")
1829 (72")	1			254 (10")
2438 (96")	1			1
2743 (108")	1			1
3048 (120")	1			1
3658 (144")	2			1
4267 (168")	2			1
4877 (192")	2			1
5486 (216")	3			1
6096 (240")	3			1
6706 (264")	3			1
7010 (276")	3			1

\*EXAMPLE TABLE WITH 3' PIT, DIMENSIONS VARY WITH TRAVEL

ANCHOR POINTS



FORCES

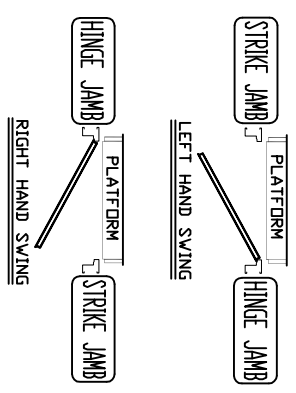
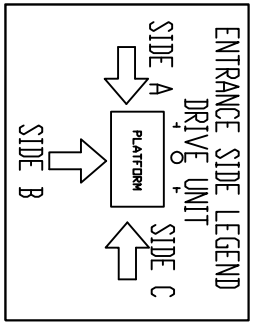
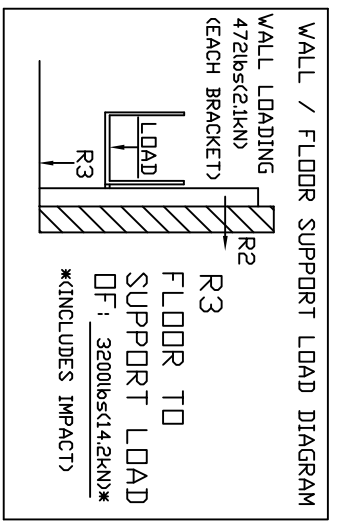
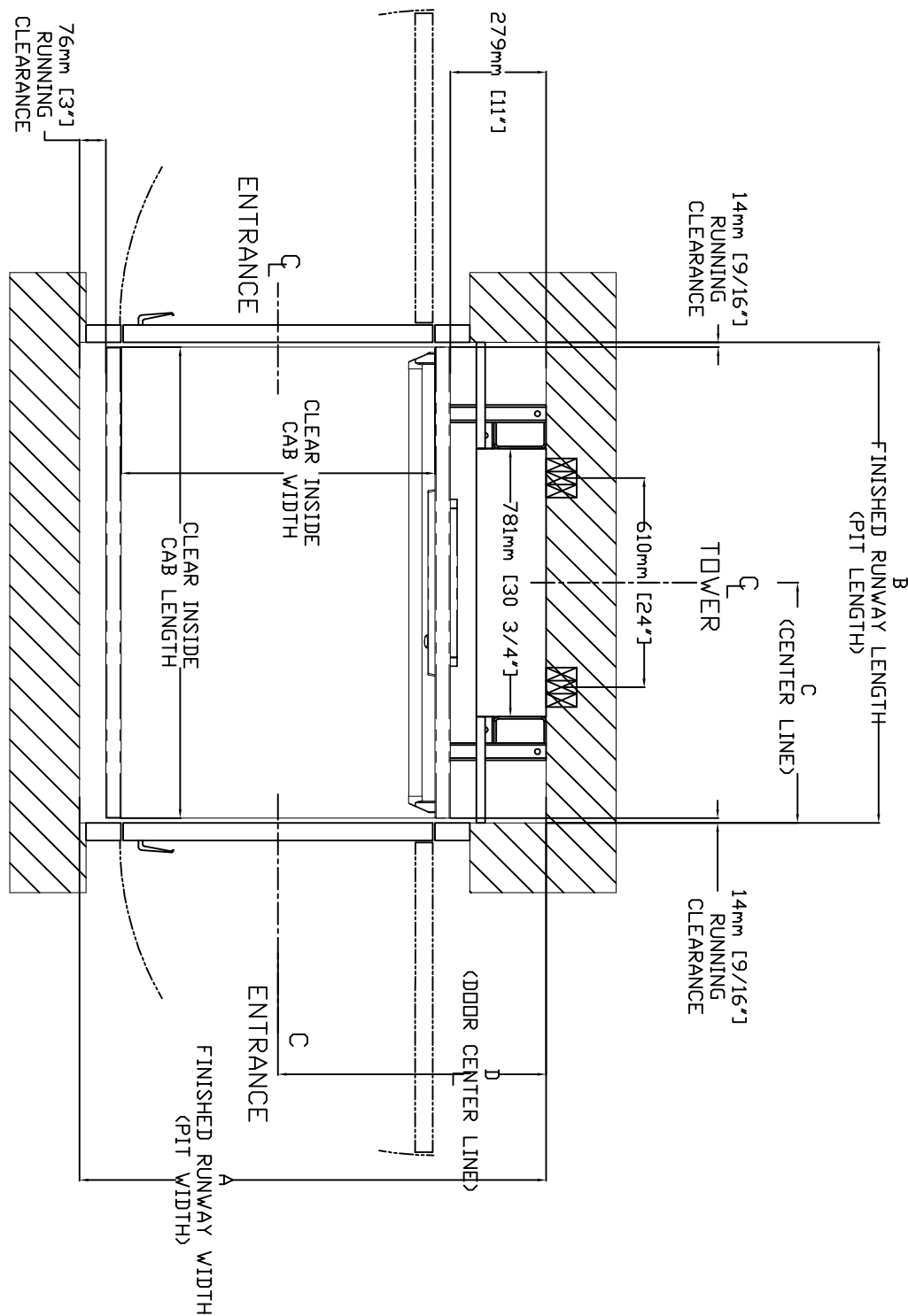


TABLE 2- HOISTWAY DIMENSION

CLEAR INSIDE CAB WIDTH	CLEAR INSIDE CAB LENGTH		FINISHED RUNWAY WIDTH		FINISHED RUNWAY LENGTH		TOWER CENTER LINE		DOOR CENTER LINE (IN CASE OF 36" DOOR)	
	mm	Inches	mm	Inches	mm	Inches	mm	Inches	mm	Inches
914	36	1219	48	53 1/2	1359	53 1/2	1248	49 1/8	624	24 9/16
914	36	1372	54	53 1/2	1359	53 1/2	1400	55 1/8	700	27 9/16
914	36	1524	60	53 1/2	1359	53 1/2	1553	61 1/8	776	30 9/16
1067	42	1219	48	59 1/2	1511	59 1/2	1248	49 1/8	624	24 9/16
1067	42	1372	54	59 1/2	1511	59 1/2	1400	55 1/8	700	27 9/16
1067	42	1524	60	59 1/2	1511	59 1/2	1553	61 1/8	776	30 9/16



THE INFORMATION DISCLOSED HEREIN IS THE EXCLUSIVE PROPERTY OF **savarria**™

AND MAY NOT BE USED BY OTHERS WITHOUT PRIOR WRITTEN CONSENT

TITLE: V1504 TYPE - 2

PROJECT: LOCATION: DRAWING NO: V1504 HOISTWAY

CUSTOMER: DATE: 08/24/2009 REVISION: 001

SCALE: 1:1 DATE: 06/25/2010

DRAFTER: VINDO C SHEET 1 OF 1